



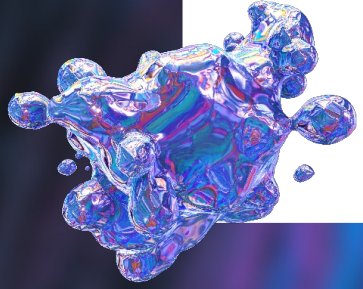
Intelligent
NPC

More than
intelligence

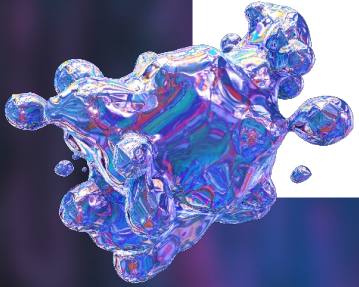
Our Demo

*Video that helps you
better understand our
products and techniques.*

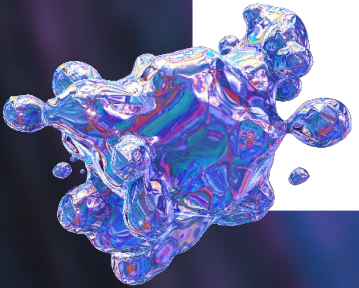




- 01.
- **Intelligent NPCs based on LLM**
 - **Powered by hundred millions of parameters**



- 02.
- **Customize personalized iNPC**
 - **Build Web3 creator economy**

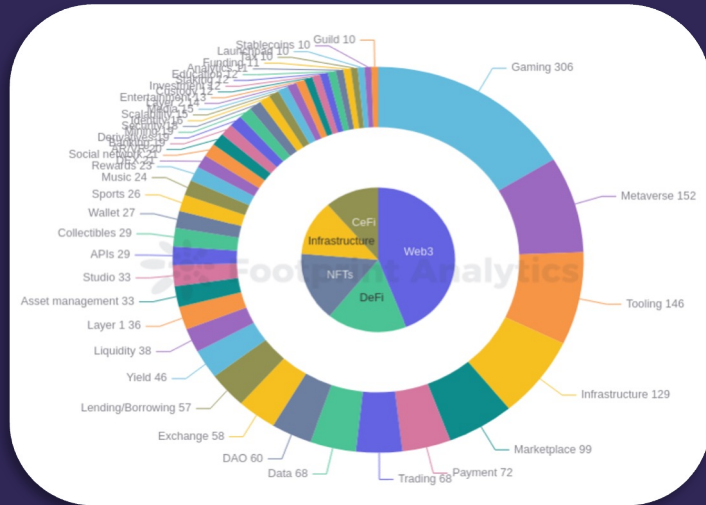


- 03.
- **Toxic treatment**
 - **Create pure community environment**

Summary



Diana



The blockchain game market has the highest acceptance, meanwhile GameFi has the highest share in it.



Paiim points

How to avoid user drain??

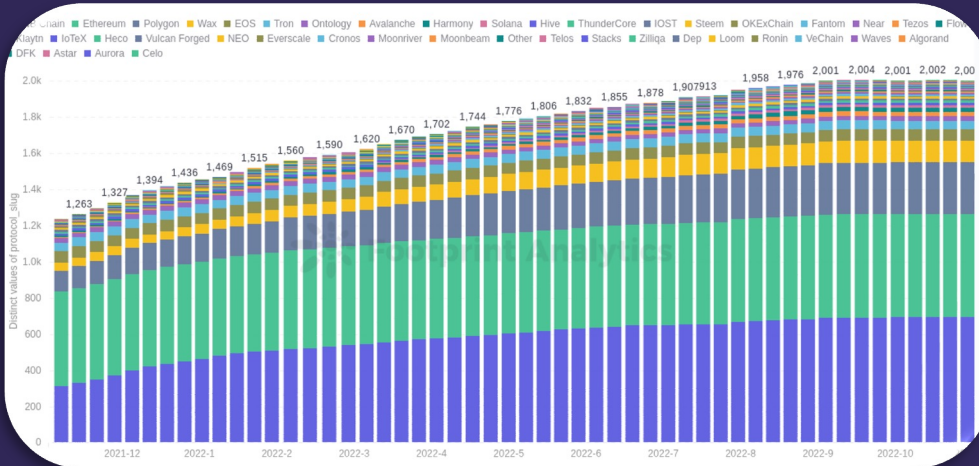
How to stimulate token economy??

59%

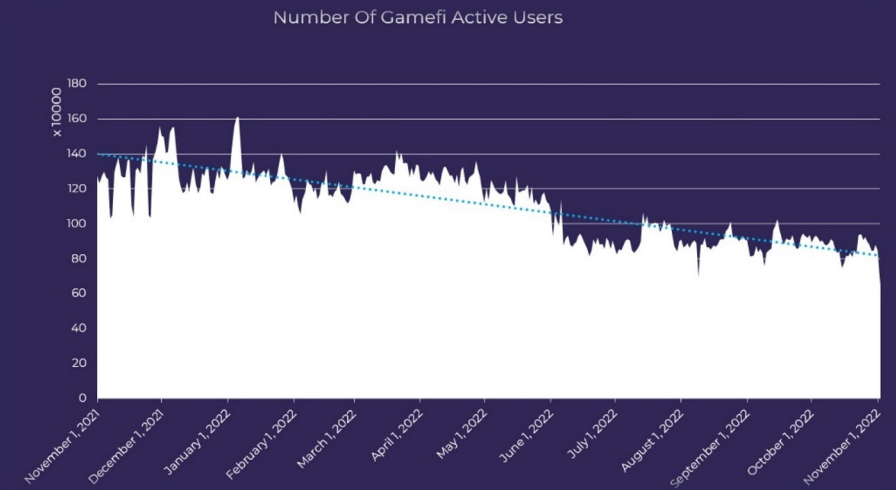
of consumers are excited about transitioning their everyday activities to the metaverse

95%

of business leaders expect the metaverse to benefit their industry within five to ten years



In recent years, the total number of gaming projects on each chain has continued to rise steadily



The number of active users in the GameFi market is flattening



The Sandbox is a very energetic community

Player



- The Sandbox has made games since 2012
- Has an excellent player community
- Devoted to the development of the community significantly

Creator



- possessing a creative community of artists that distinguishes Sandbox from ordinary games
- Creators continue to contribute new elements into The Sandbox

Partner



- Partners, such as Binance and Matic, play an irreplaceable role in expanding the influence of The Sandbox
- Providing financial and technical support



001.

*User
Activities*



002.

*NFT
Assets*



003.

*Celebrity's
Spokesperson*



004.

*Virtual
Users*

What iNPC can bring to The Sandbox



1

- *Stimulate players' interest and give players more possibilities to explore*
- *Act as players' online agents*

2

- *Bring new elements to the token economy with its rare intelligence*
- *iNFT attracts more partners*

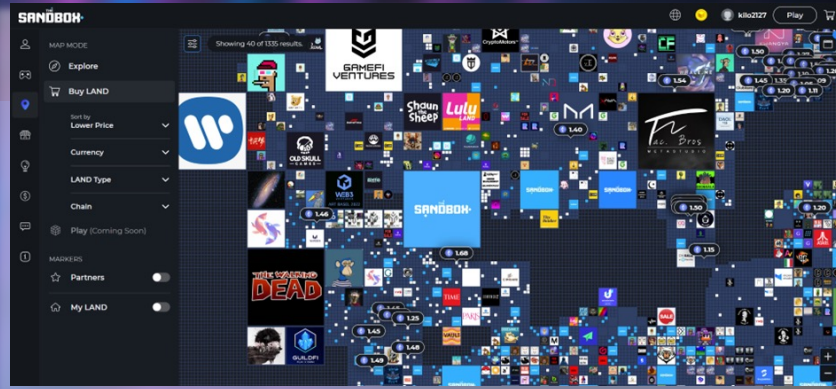
3

- *As a virtual spokesperson, iNPC speaks for the brand of The Sandbox's virtual continent*

4

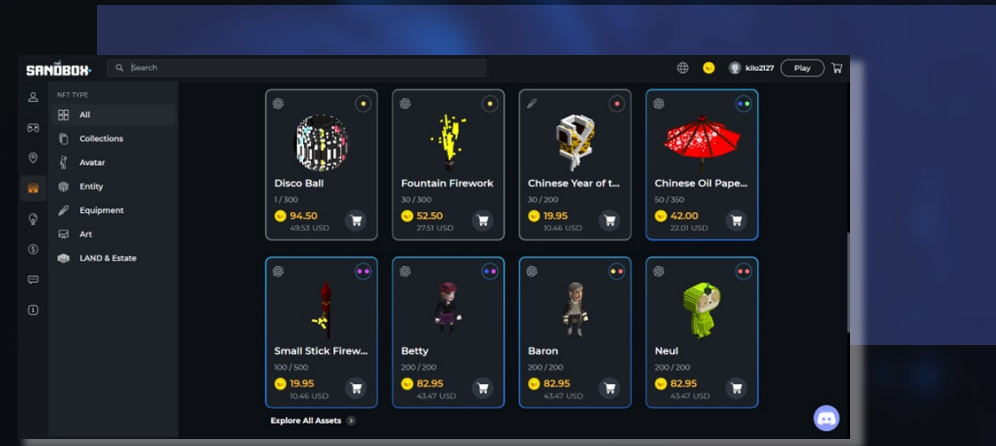
- *With dialogue generating function, iNPC can chat with tourists about what they have seen and heard, attracting gamers to join the community*

iNPC+ Joint Brand



- Provide brands with avatar or customized spokespersons
- Use AI technology to integrate brand promotion into game elements, creating a circle-breaking effect

- Based on the existing NFT assets adding INFT, iNPC, IESTATE and other types of smart assets
- A series of services and expanded ecology can be derived, and more activities and transactions in The Sandbox can be participated



iNPC+ Game Assets

AIGC+ Game Operation



- Use iNPCs to build diverse economic models to enrich players' income, such as designers selling iNPCs, trainers selling corpus and trained AI models
- Users can provide data storage for iNPC or games, and share farm revenue, etc.

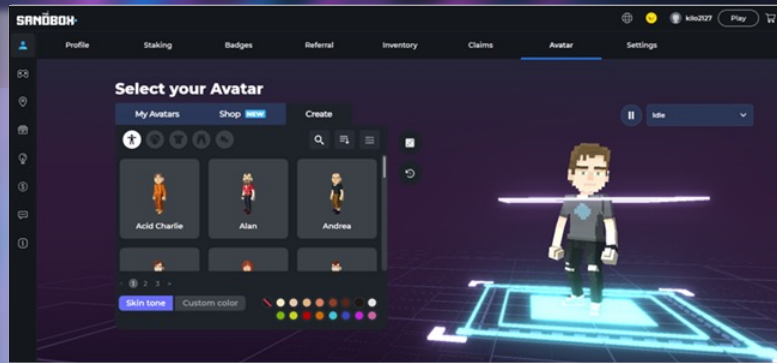
- Use AI to generate content like text and images, using in scenarios such as game operations and community comments
- Carry out activities inside and outside the game to empower NFT trading markets or information aggregation websites

A screenshot of a game leaderboard interface. The interface is dark-themed with orange and yellow accents. It shows a table of player rankings for 'Alpha Season 3'. The table has columns for Rank, Player, Validated Ethos Points, Completion Time, and Prizes. A trophy icon is visible on the right side of the interface, along with a total reward amount of 1,500,000 SAND. Below the table, there are buttons for different rank ranges and their corresponding rewards.

RANK	PLAYER	VALIDATED ETHOS POINTS	COMPLETION TIME	PRIZES
1	OnlyGmle	103	04 h. 11 m. 31.54 s	30,000
2	hador #	103	04 h. 16 m. 55.65 s	10,000
3	Drp2Hard	103	04 h. 17 m. 45.30 s	10,000
4	skllo	103	04 h. 18 m. 52.44 s	10,000
5	#Roak228a	103	04 h. 18 m. 47.59 s	10,000
6	grawnds	103	04 h. 20 m. 08.01 s	10,000
7	hugattaya	103	04 h. 27 m. 51.91 s	10,000
8	gully	103	04 h. 33 m. 47.55 s	10,000
9	happ1028	103	04 h. 35 m. 03.00 s	10,000

iNPC+ Creator Economy

iNPC+ Digital Avatar



- Integrate AI technology into game creation tools and development tools
- For example, based on the VoxEdit editor, provide a series of AI technologies to help players create more attractive games and scenes.

- Using AI technology to optimize avatar functions and add more human-realistic features
- Such as diverse languages, accents, clothing, body movements, personalities, etc., to enrich the players' experience and interaction in the game.



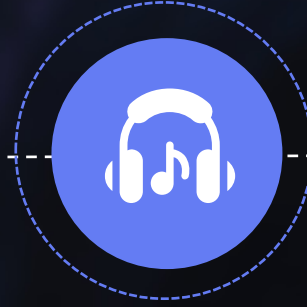
iNPC+ Development Tools

iNPC NFT



Unique Intelligence

Different training sets and hyperparameters allow iNPC to have its own personality



Flexible Sound

Customize sounds for your own iNPC, or by famous stars' voices



Distinctive Appearance

Dress up your iNPC by DIY or according to artists or anyone you are familiar with

AI x Games — Application Layer — Market Map

WIP — link below

GAMES FUND ONE

Text

foundation models: GPT-3, GPT-J, Cohere, Alpha, AI21, Codex, codebert, CodeGen, DialoGPT etc...

NPCs

Chatbots

Moderation

3d foundation models: DreamFusion, Get3d, make-a-video, imagen video

Deployment

3d Asset Generation

Avatar Generation

Animations

Optimization tabular models, vertical AI

Training / Assistants

QA + Testing

Live Ops

Audio harmonai, whisper, MuBert

Audio!

Other DALL-E, DALL-E Mini, Midjourney, Stable Diffusion, CLIP, waifu diffusion

Virtualized AI Studios

Spatial Reasoning

Foundation Models

Text

GPT-3
GPT-J
Cohere

Alpha AI21
Codex

Codebert
CodeGen
DialoGPT

Image

DALL-E
DALL-E Mini
Midjourney

Stable Diffusion
CLIP
Waifu Diffusion (uwu)

3D

DreamFusion
Get3d

Video

Make-a-video
Imagen video

Audio

Jukebox
Whisper
Harmonai



modbox

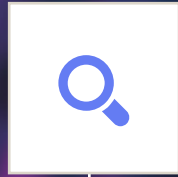


rct AI

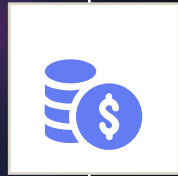


Products
Survey

rct.AI



- As a game AI solution provider, RCT AI creates a series of solutions for game developers. such as intelligent content generation, intelligent data operation others.



- multi-million dollars in the seed round financing from XingHan Capital and Y Combinator
- tens of millions of dollars in A-round investment led by Makers Fund
- multi-million-dollar in A-2 round investment led by Galaxy Interactive
- \$10 million A-3 round of investment in November 2021.



- In terms of the underlying design of the game, all NPCs in the game are not scripted. All reactions of NPCs in the game will be completed according to AI giving players a better experience of freedom.

Soulmachine VS Ours

1. Can I chat with you?

Sorry, I can't answer that.

Sure, what do you want to know about me? I have a lot of free time

2. the digital currency is so fashion currently

Sorry, I can't answer that. Try asking a Who, What, Where or Why question

I know, it's so cool to see how far we've come in the digital age.

3. How does blockchain work?

Let me think. Wikipedia says Bitcoin is a cryptocurrency invented in 2008 by an unknown person or group of people using the name Satoshi Nakamoto. The currency began use in 2009 when its implementation was released as open-source software. Here, is a picture of Prevailing bitcoin logo.

Bitcoin is a digital currency which operates free of any central control or the oversight of banks or governments.

4. Will cryptos can not be found in this world after a few years?

Here is a YouTube video I found about that. (A video about what is blockchain)

By spreading its operations across a network of computers, blockchain allows Bitcoin and other cryptocurrencies to operate without the need for a central.

5. What is a crypto wallet?

Sorry, I can't answer that.

Crypto wallets store your private keys, keeping your crypto safe and accessible.

6. What is DAO?

Wikipedia says Tao or Dao is a Chinese word signifying the "way", "path", "route", "road" or sometimes more loosely "doctrine", "principle" or "holistic beliefs". In the context of East Asian philosophy and East Asian religions, Tao is the natural order of the universe whose character one's human intuition must discern in order to realize the potential for individual wisdom.

DAO, or "Decentralized Autonomous Organization," is a community-led entity with no central authority.

7. What I can do by using cryptos in sandbox?

Sorry, I can't answer that.

The Sandbox is a virtual metaverse where players can build, own, and monetize their gaming experiences on the Ethereum blockchain using the platform's utility

Dialogue on Web3.0 topic

Dialogue on Web3.0 topic



Modbox



Advantage

- High degree of freedom: Providing modular programming and possibilities to create freely.



Disadvantage

- Complicated, modular programming is not user-friendly.
- INPC responds slowly. It takes more than 3 seconds to react, thus the user experience is poor.

Other Product

VS

Our

Single scene interaction function

Realistic interaction such as different gestures and movements, and deeply simulate the metaverse world

Less professional and unable to handle knowledge from various domains

Broader knowledge, supports everyday conversations, including knowledge in specialized fields, like Web 3.0

Answers are fixed and limited

Responds flexibly and appropriately to a great variety of complex sentences and questions

Only remains silent or gives undue answers, when confronted with offensive, sensitive language

High security and able to give appropriate response to aggressive or sensitive issues



Platforms and Functional Competition

	Parlai	OpenAI	Modbox	PVA	Character.AI	RCT.AI	Ours
NLP	√	√	(gpt)	√	√		√
Custom Voice & Localized					√	√	√
Animation & interaction			√			√	√
Facial Capture & CV		√					√
Downstream Task	√	expensive					√
Metaverse			√			√	√
Location & navigation						√	√
Communication Extension	√	√		√	expensive		√
Model Extension	√	expensive					√
Toxic Treatment	bad						√

Toxic Treatment	bad						√
Model Extension	√	expensive					√

Tech overview



Multiple intelligence algorithms

- Based on the reasoning system of large model
- Vivid 3D model, facial expression, voice, movement and the scene integrate Chinese elements



Toxic information detection system

- Analyze External inputs and prevent the robot from being trained by external undue inputs



Inference based on large models

- Models show empathy and sympathy in casual talk and formal talk
- Expert system and knowledge database are introduced to strengthen the ability to answer professional knowledge.



Cloud-native digital human brain

- Self-designed communication framework enables any external system device to call the virtual human system service
- Make the core system of digital human cross-platform and highly scalable

TEAM **Adviser**



Wang Yang

Wang Yang, Mathematician; Vice President of the Hong Kong University of Science and Technology; Professor of the Department of Mathematics; Director of the Big Data BioIntelligence Laboratory of the Hong Kong University of Science and Technology; Deputy Director of the Institute of Big Data of the Hong Kong University of Science and Technology.



OUR TEAM



Karl

A senior data scientist and a veteran in Web3 and AI



Long

An expert in Unity 3D, algorithms engineering and data science



Sanda

A computer scientist from a top university in China majoring in AI



Michael

A passionate algorithm engineer with a focus on NLP

OUR TEAM



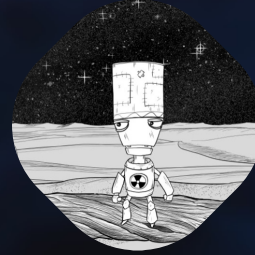
Ronald

A senior NLP experts with platform design and translation



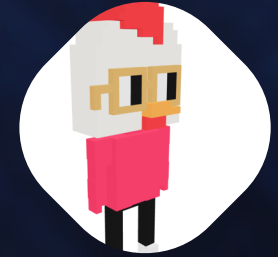
Cecilia

An investment advisor and business developer



Eric

An enthusiastic AI believer with rich experience in PR and BD



Star

A skillful student in speech algorithms, digital human and deep learning



***Thanks
you***